

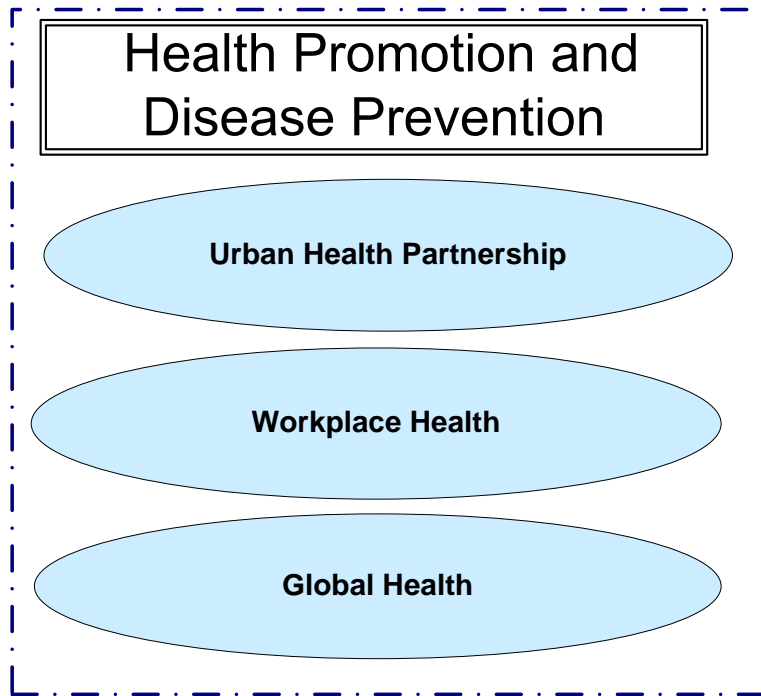
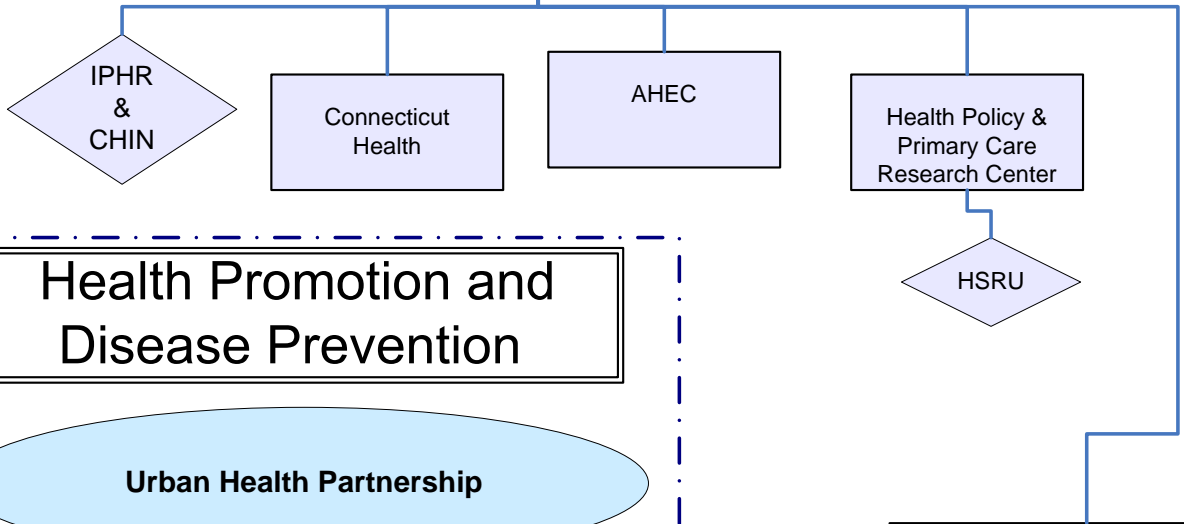
Academic appointments for faculty engaged in multiple CPHHP projects and other Signature Program work.

\* Anticipate joint appointments of faculty in many departments and schools within the University  
 \*\* Each faculty member will have a primary academic appointment for the purposes of promotion, annual evaluation, and other department level decisions. The optimal academic home for each recruit will be determined by the dean in consultation with the recruit and appropriate department chairs.

**Strategic  
Planning Team**

**CENTER FOR PUBLIC HEALTH AND HEALTH POLICY**  
Co-Directors: Ann Ferris and Eileen Storey

**External Advisory  
Committee**



**Academic Educational Programs:**

- MPH Program
- Doctoral Programs
- Workforce Development & Educational Outreach